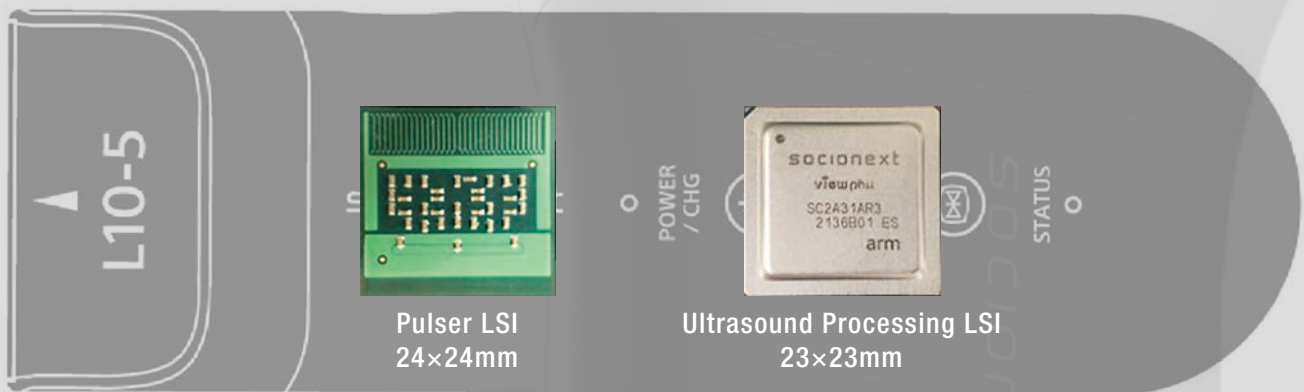


for Wireless Ultrasound Probe viewphii 64 - LSI

"Socionext is the Japanese company that provides LSI (semiconductors) globally. Our proprietary technologies cultivated over many years have enabled us to develop the 64-channel wireless ultrasound probe system using only two types of dedicated LSIs (three chips). Based on this dedicated LSI, we provide the development platform for wireless ultrasound probes with ultra-low power consumption, small size, light weight, high image quality, and high performance."



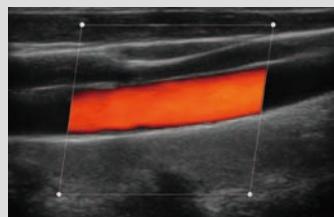
All functional blocks*1 required for ultrasound diagnostic equipment are integrated in dedicated LSI developed by Socionext.

High image quality / High performance

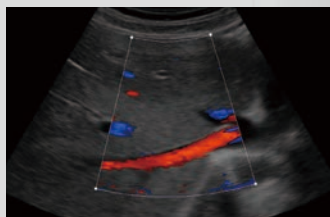
Thyroid



Kidney



Carotid artery



Liver

Sample images acquired using viewphii 64-LSI

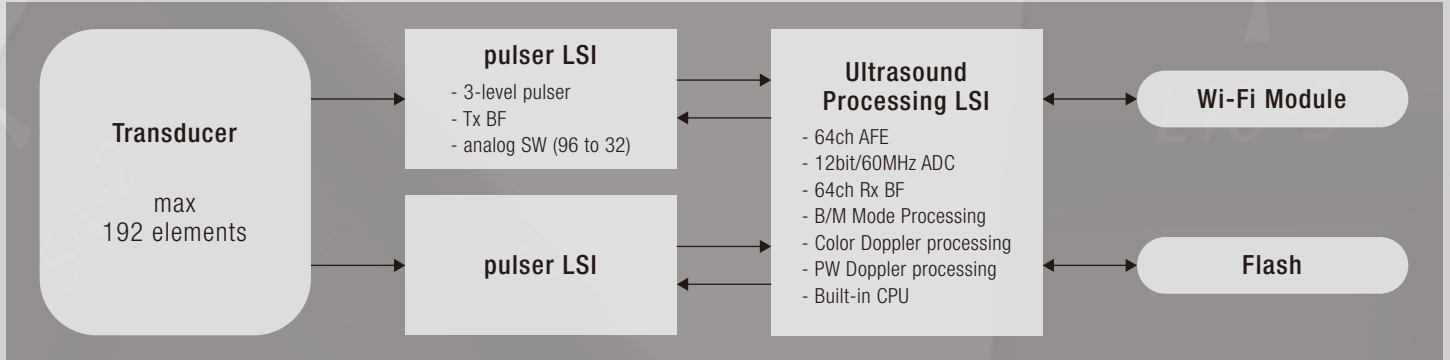
Ultra-low power consumption, uninterrupted Wi-Fi communication, small-sized and light-weight wireless ultrasound probe



New wireless ultrasound prototype probes with viewphii 64-LSI

*1 Beamforming, B Mode, M Mode, Color Doppler, PW Doppler, Harmonic Imaging, Spatial Compound, etc.

System block diagram



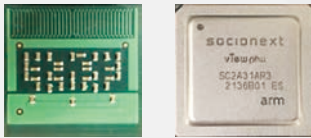
Chipset Feature

- Only 3 chips realize whole ultrasound system (no need external component)
- Tx channel: max 192 (using two Pulser LSI)
- Rx channel: max 64 (using two Pulser LSI)
- 128 Rx channels are available using 4-pulsers and 2-ultrasound processors.
- +/-15V to +/-40V Pulser (3-level)
- Harmonic Imaging (PI/Filter, selectable), Spatial Compound, Trapezoid Scan
- Ultra Low Power Consumption: typ. 1W @ B Mode operation
*depend on the system configuration (ex:frame rate,etc.)
- Support transducers: linear/convex/sector
- Support unbreakable wireless communication

Business model

Flexibly supporting the diverse needs of manufacturers

viewphii 64-LSI



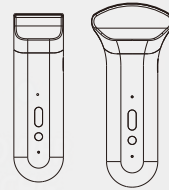
Deliver the chipset

viewphii 64-PCB



Deliver the PCB

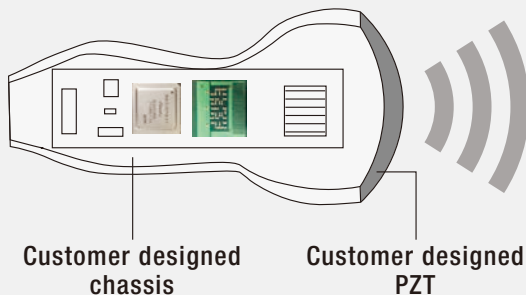
probe product (OEM/ODM)



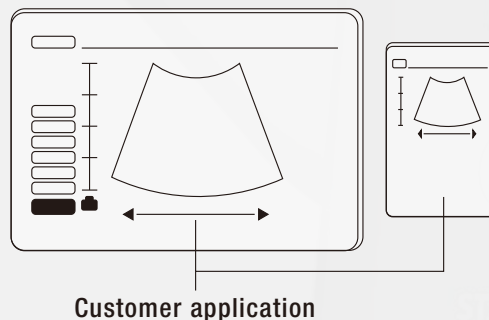
Deliver the customized products

Customer designed wireless probe, viewphii 64-LSI in it.

Customer designed probe



Customer-selected mobile device



Development Kits to be provided

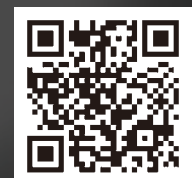
- viewphii 64-LSI datasheet
- PCB circuit diagram & BOM list (reference)
- Firmware for PCB (reference)
- Wireless communication API
- Application Software (reference)
- SDK board
- *Contract is required in order to use the development kits.

By combining customer-owned asset technologies with Socionext's LSIs, we can develop customer-specific wireless probes.

The Products and product specifications described in this document are subject to changewithout notice for modification and/or improvement. At the final stage of your design,purchasing, or use of the products, therefore, ask for the most up-to-date Product Standards in advance to make sure that the latest specifications satisfy your requirements. All company names, brand names and trademarks herein are property of their respective owners.

Socionext Inc.
Nomura Shin-Yokohama Bldg., 2-10-23 Shin-Yokohama, Kohoku-ku, Yokohama, Kanagawa, 222-0033, Japan
<https://www.socionext.com>

Copyright 2023 Socionext Inc. AD04-00146-1E April 2023 Edited : Medical Solution Team



<https://viewphii.com/en>